

A person with long dark hair, wearing a dark jacket and a large black backpack, is walking away from the camera down a long, narrow hallway. The hallway has light-colored walls with several framed pictures and notices. The floor is made of light-colored tiles. At the end of the hallway, there is a doorway leading to a brighter area. The lighting is dim, with a single light fixture visible on the ceiling.

**@MAGGIESNOTAFRAID**

[WWW.TASHANN.COM](http://WWW.TASHANN.COM)

Horror films are widely considered the most profitable film genre. This is partially because of the world wide appeal of horror films, but is also because of their relatively low production budgets, which leave more room for profit margin. For example, the 15 most successful horror movies from 2000-2018 budgeted between 500K-5 Million on average saw a 2600% return on investment.

In addition, helping this profit margin, horror is a genre which is loved nearly equally between men and women. It also has the most racially diverse audience of any film genre. These statistics become even more level between gender and race when speaking about paranormal horror films, which *@Maggiesnotafraid* is.

In times of social and political turmoil (which, right now is pretty much a given) horror tends to grow in popularity and has been on an upswing since 2022.

In addition to a theatrical release, horror movies have a long lasting domestic and international life via steaming services, which can significantly elongate the profits of films regardless of their initial box office performance.

Horror has one of the most loyal fan bases of any film genre (surpassed only by Sci-Fi) and often with any horror movie there are chances to monetize merch for the film such as shirts, funko pops, figurines, masks ETC.

There are always risks to making a film, but horror is universally considered one of the safest film investments.

# WHY LOW BUDGET HORROR?





# LOGLINE

A social media famous ghost skeptic must confront her convictions and fight for her life after she and her production team are trapped inside a demonic house.

# IMPORTANT SPECS



## GENRE

Horror, Paranormal

## PAGE COUNT

98 pgs

## EST. SHOOT DAYS

15-20 Days

## BUDGET

500K - 1.2 Million

## CAST

3 main - 4 supporting |  
Female Leads.

## LOCATIONS

Los Angeles | 1 main  
location, 9 minor  
locations



A woman with light brown hair and blue eyes is peering through a jagged hole in a white wall. She has a shocked and intense expression, with wide eyes and a slightly open mouth. The background behind her is dark. The text 'THE TEAM' is overlaid on the image in a white, bold, sans-serif font, with horizontal lines extending from the left and right sides of the text.

**THE**

**TEAM**

DIRECTOR/SCREENWRITER

# ABOUT TASH ANN



Tash has been working as a director/writer/producer on short content since 2013. She worked from 2020-2022 at Icon Media, a short content company owned by Jay Shetty. At Icon Media she created over 40 pieces of short content in 2 years, with over a million views.

In 2023 she joined Born Ready Films, a commercial film production company as a director and producer. She is currently working there creating videos for clients like TMobile, Weight Watchers and Transformer Tables.

In 2022 her web series pilot Abstraction had its festival run, racking up 22 best Web Series awards and one Best Director award.

For full work samples, awards, resume and reel please visit her website: [Tashann.com](https://Tashann.com)

Thank you for considering @Maggiesnotafrail. I have been fascinated with ghosts my whole life. I remember several instances from my childhood where I saw, heard or felt something that could not be explained. I also have a love of the sociological history that lends itself to modern day ghost stories and why we tell them.

Like my main character, Maggie, I am an avid (and unashamed) watcher of ghost hunter shows and the science and psychology that often debunks them.

What attracted me to telling this story is one simple concept: How far will an individual go to stick to their own core beliefs, even in the face of proof they are wrong?

Each of the characters in this story have a core value tested in a series of terrifying experiences. They eventually learn that their only chance for survival is letting go of these beliefs.

I feel that an inability to budge from one's belief system, even when believing may cause destruction is a universally relevant theme, especially in the world today. Through the lens of horror, we can literally see how destructive this all too common rigidity in our own beliefs can be.



## DIRECTOR STATEMENT

DIRECTOR OF PHOTOGRAPHY

# ABOUT GEORGE SU



George Su is a cinematographer who earned his MFA at the American Film Institute (AFI) and his BFA in Film & TV at New York University.

His feature credits include *Marin Blue*, *Home James*, *Comeback Dad*, *For the Love of Ruth*, and *To Hell and Back*

Brand clients: Apple, Best Buy, LG, McDonald's, Shakey's, Coca-Cola, Sam Adams, Zacapa, Olay, Dyson, Toyota. His television work can be seen on MTV, VH1, BET, TV One, UP TV, Viceland, Discovery, History, Animal Planet, and Food Network.

George previously taught Cinematography at the New York Film Academy's Los Angeles campus and is a proud member of IATSE Local 600.



# THE SUMMARY

When Maggie loses the scholarship she depends on to get her Master's Degree, she is hopeless. Nearing 30 with 4 roommates, no prospects and a job walking a rich woman's dogs, there is almost nothing she won't try.

When her friend Hazel, who has become a successful influencer suggests that she turn her love of debunking ghost hunting shows into a social media brand, she can't think of a reason to say no... Even if she really wants to.

Creating her alter ego, @maggiesnotafraid fills a much needed void in the internet and after building her brand, she finds herself being offered a new streaming show in which she makes house calls to haunted locations.

The show's first house belongs to Rachel and Hugo Sosa. They are a young married couple grieving the loss of their first baby who died at only 6 months old. They wanted a fresh start by buying and re-doing their first house, but all they found was torment.

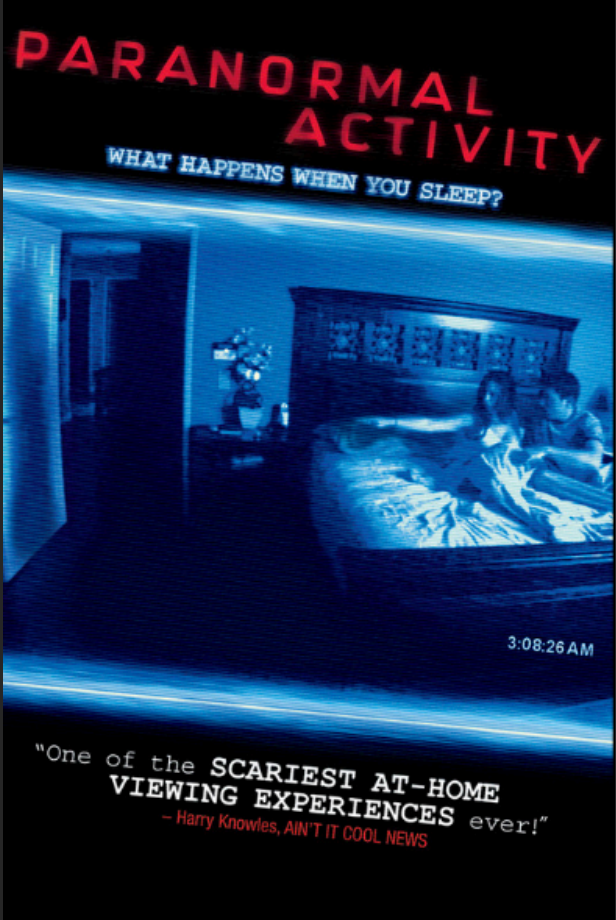
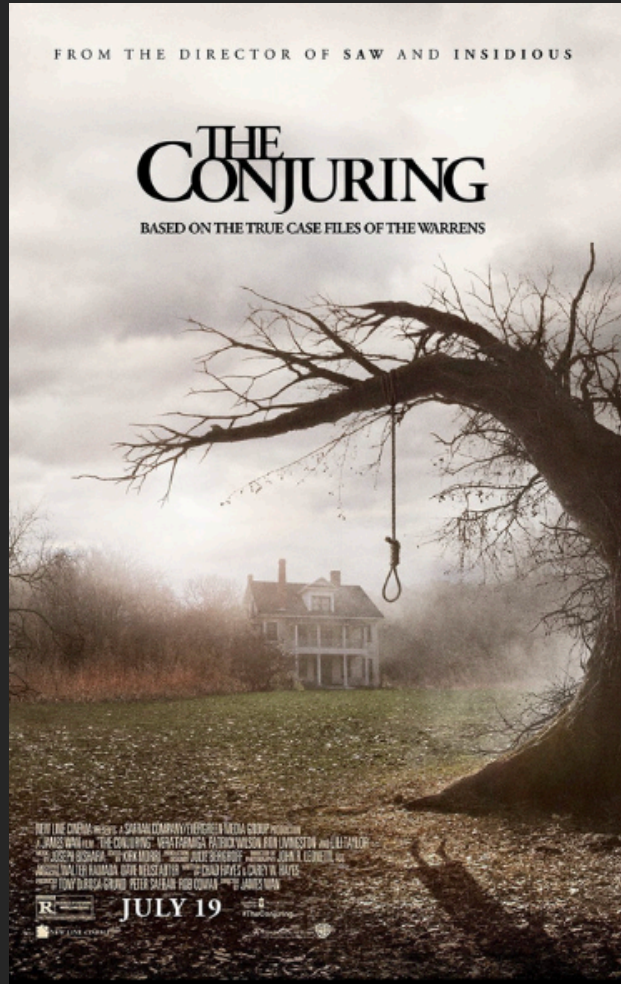


# THE SUMMARY CONT'D

Though Maggie distrusts their motives, she pushes forward with the show, promising to make them feel safe in their home again. However, shortly after sundown, things that Maggie and her team cannot explain begin to happen. Soon they are all being put in harm's way.

Before long, even Maggie must admit this house is charged with a demonic energy, but has she realized it too late for them to make it out alive?





# COMPARABLES

(Click each poster for their box office mojo page)

A close-up, low-angle shot of a person's leg wearing blue denim jeans and a dark-colored sneaker with a light-colored sole. The person is standing on a dark staircase with a metal handrail on the left. The lighting is dramatic, highlighting the textures of the jeans and the shoe.

**THE**

**CAST**

Cast Comparable:  
Kiernan Shipka  
(Mad Men, Totally Killer)



Cast Comparable:  
Bailee Madison  
(Once Upon a Time,  
Strangers: Prey at Night)

Maggie is a lot of things. She is a survivor of abuse, a psychology major, loyal friend and an absolute know it all. Her main hobby is hate watching and debunking ghost hunting shows, which she is encouraged to turn into a career of her own when her college prospects don't pan out.

Her need for control and being right stem from her abusive past. They have served to protect her for many years, but in order to survive this demonic house, she must let go of these previously held beliefs.

# MAGGIE



Cast Comparable  
Amanda Sternberg  
(The Hate U Give, Bodies  
Bodies Bodies)



Cast Comparable  
Antoinette Robertson  
(Dear White People, The  
Blackening)

Hazel is not a rule follower. She does not appreciate authority. She will work harder than anyone around her and she is fiercely protective of her friends. She is a professional influencer and is really excited to help Maggie get started in that world too. She is hopeful that bringing one of her close friends into her influencing world will help strengthen her bond with both Maggie and Faith. Once Maggie's success eclipses hers, she can't help feeling jealous and trying to latch onto Maggie's rising star.



Cast Comparable  
Beanie Feldstein  
(ACS: Impeachment,  
Lady Bird)



Cast Comparable  
Shannon Purser  
(Stranger Things, Wish  
Upon)

Faith clings to religion as a means of avoiding things that scare her in life, and these days a lot scares her. She lives with her aging grandmother and her two best friends are now professional influencers. This is a level of being seen in the public eye that Faith has never been comfortable with. She also takes issue with their dabbling into conjuring the afterlife. But to her nothing is more important than Family and she counts Maggie and Hazel among her family.

However as she dives deeper into her religion she struggles to find a real connection with her friends. When she has a falling out with Maggie just as Maggie and Hazel begin to work on the new show, she can't shake the feeling that her friends are in danger. Will her fears and beliefs stop her from being there when her friends need her the most?

FAITH



Cast:

**Chaney Morrow**

(Haunt, Malum, Wrong Turn:  
The Foundation)

\*LOI Available upon request.



Ethan is a Spookz producer who is assigned to Maggie's show. He is a generally good guy who sees a lot of potential in Maggie, but wouldn't mind if their show ended up proving paranormal activity rather than disproving it.





Cast Comparable:

Jharrel Jerome

(Moonlight, When They See Us)



Cast Comparable:

Lakeith Stanfield

(Atlanta, Get Out)

Heston is a roommate and friend of Maggie as well as a talented videographer looking for his break into television. When Maggie's show offers to hire him, it's too good to pass up. But once he sees how dangerous the job really is, he must decide if a chance at his dream career is worth his life.

HESTON



Cast:

**Lilan Bowden**

(Andi Mack, Murderville,  
Shrinking)

\*LOI Available upon request.



Heston is a roommate and friend of Maggie as well as a talented videographer looking for his break into television. When Maggie's show offers to hire him, it's too good to pass up. But once he sees how dangerous the job really is, he must decide if a chance at his dream career is worth his life.

Cast:

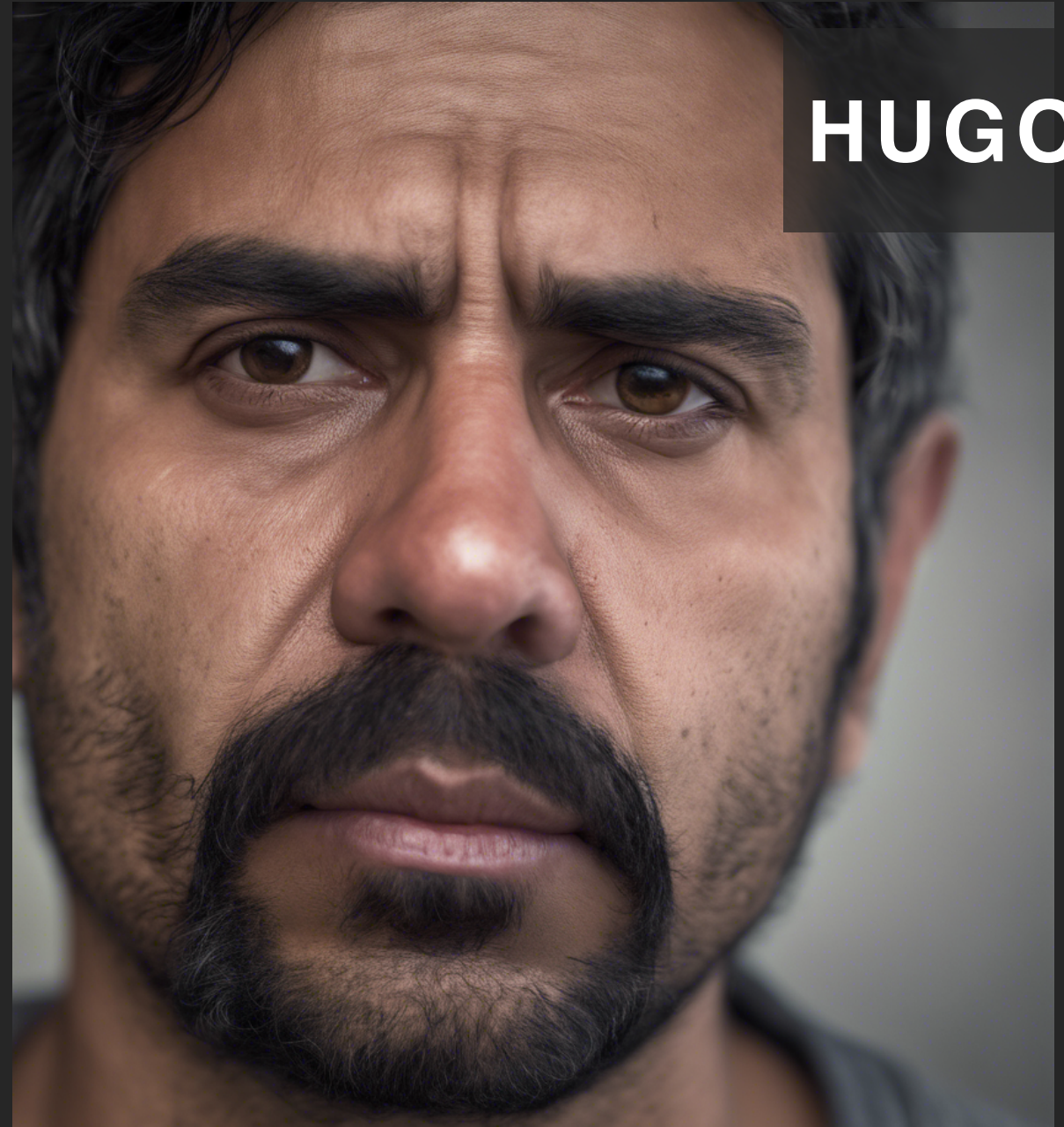
**Rigo Sanchez**

(Station 19, Animal Kingdom,  
McFarland USA)

\*LOI Available upon request.



Heston is a roommate and friend of Maggie as well as a talented videographer looking for his break into television. When Maggie's show offers to hire him, it's too good to pass up. But once he sees how dangerous the job really is, he must decide if a chance at his dream career is worth his life.





● REC

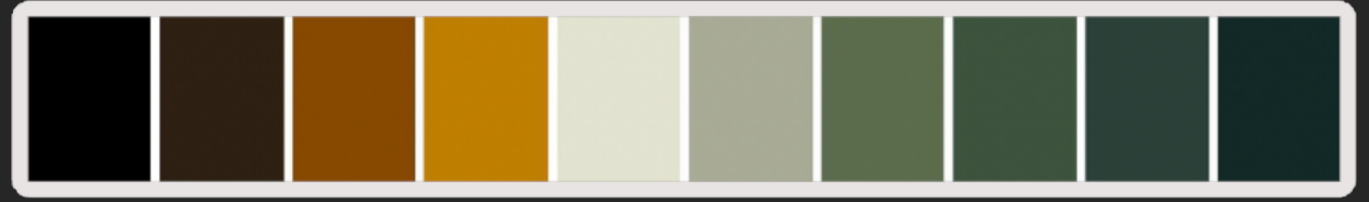
+

- VISUAL

STYLE -

# LIGHTS & COLORS

(PRE HAUNTED HOUSE)



Pre-Haunted house should see the same overall color scheme that will prevail through the remainder of the movie but the lighting should lean warmer and gentler than the later scenes. This will help establish that light equals safety. This should include (as much as possible) the houses that she debunks.



# LIGHTS & COLORS

## (HAUNTED HOUSE)



Light in the house after dark will rely heavily on practicals like lanterns, flashlights ETC as well as outside sources like the moon. They are functioning with house lights off as is standard in haunting investigations. The overall look will be quite dark and dramatic. When the lights do turn on in the house, lighting reverts mostly to the pre-haunted house set up.



# WIDE SHOTS



# MEDIUM SHOTS





# CLOSE & EXTREME CLOSE UP SHOTS



# INSERT SHOTS



# GHOST SHOW FOOTAGE

This film will remain largely cinematic but at crucial moments when we need to see through the character's cameras, we will incorporate the style the story is mimicking. This includes night vision green, POV shots and docu-style filming.

Reference shows: *Ghost Adventures*, *Ghost Hunters*





**THANK  
YOU**

TASHANN.CA@GMAIL.COM